



SPRINKLER HUBS MODELS 850, 851 & 853

The **Shurjoint** Sprinkler Hubs are grooved-end manifold fittings with a number of threaded outlets to accommodate flexible sprinkler hoses. The Sprinkler Hubs can also be used in combination with flexible sprinkler hoses and traditional hard piping depending on your requirements. These fittings work as a hub for multiple flexible hoses and or hard pipe runs, thus reducing the number of headers, drop nipples and fittings required. All outlets are 1" NPT or BSPT. Maximum working pressure 300 psi (20 bar, 2.0 MPa) CWP. cULus listed and FM approved. The C-to-E dimensions conform to ANSI B16.3 Class 150.



Pressure-Temperature Rating

Size	Nom. Rating	Working Pressure (STD, Roll-grooved)
2½" x 1" x 1" – 2½" x 2½" x 1"	Class	750 psi @ 100°F
65 x 25 x 25 – 65 x 65 x 25	300	52 Bar @ 38°C

*Working pressure is based on standard wall carbon steel pipe.

*Proof test pressure: 1.5 times the working pressure, non-shock cold water.

*Burst pressure is engineered minimum 3 times the working pressure.

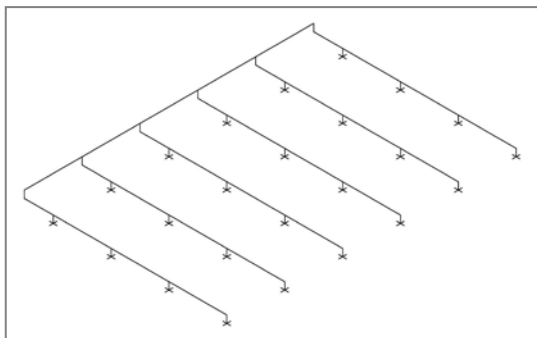


Before
Single outlet

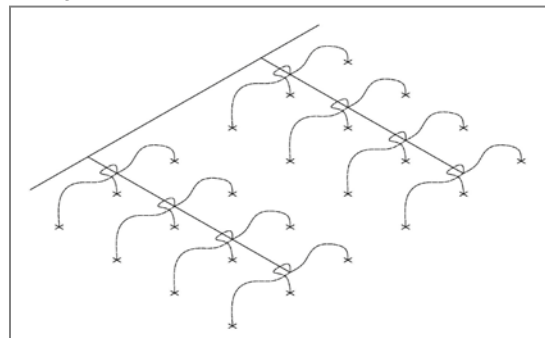


After
Multiple outlets

Before
Conventional



After
Using Sprinkler Hubs



MATERIAL SPECIFICATIONS

- **Body:**

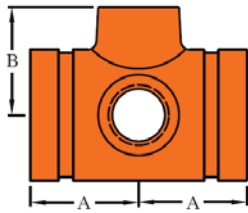
Ductile iron to ASTM A536 Gr. 65-45-12 or to ASTM Gr. 65-45-15.
Min. tensile strength 448 MPa (65,000 psi)

- **Threads:**

NPT or BSPT (female)

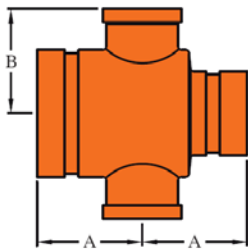
- **Body coating:**

Orange color painted or red RAL3000 color painted. Bare metal with a thin layer of rust-prevention oil
 Hot dip galvanized

MODEL 850 SPRINKLER HUB - 3 OUTLETS


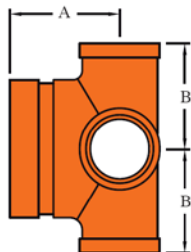
Model 850 Sprinkler Hub			
Size	A	B	N.W.
mm	mm	mm	kgs
in	in	in	Lbs
50 x 50 x 25 (3) 2 x 2 x 1 (3)	60 2.38	51 2.02	1.00 2.20
65 x 65 x 25 (3) 2½ x 2½ x 1 (3)	60 2.38	57 2.25	1.25 2.75

(): Number of outlets

MODEL 851 REDUCING SPRINKLER HUB - 3 OUTLETS


Model 851 Reducing Sprinkler Hub			
Size	A	B	N.W.
mm	mm	mm	kgs
in	in	in	Lbs
50 x 40 x 25 (3) 2 x 1½ x 1 (3)	60 2.38	51 2.02	1.00 2.20
65 x 40 x 25 (3) 2½ x 1½ x 1 (3)	60 2.38	57 2.25	1.20 2.65
65 x 50 x 25 (3) 2½ x 2 x 1 (3)	60 2.38	60 2.25	1.30 2.86

(): Number of outlets

MODEL 853 SPRINKLER END HUB - 4 OUTLETS


Model 853 Sprinkler Hub			
Size	A	B	N.W.
mm	mm	mm	kgs
in	in	in	Lbs
40 x 25 (4) 1½ x 1 (4)	60 2.38	46 1.80	0.8 1.76
50 x 25 (4) 2 x 1 (4)	60 2.38	51 2.02	1.00 2.20
65 x 25 (4) 2½ x 1 (4)	60 2.38	57 2.25	1.20 2.64

(): Number of outlets

General Notes:

- Pressure ratings listed are CWP (cold water pressure) or maximum working pressure within the service temperature range of the gasket used in the coupling. This rating may occasionally differ from maximum working pressures listed and/or approved by cULus and/or FM as testing conditions and test pipes differ. For additional information contact **Shurjoint**.
- Maximum working pressures and end loads listed are total of internal and external pressures and loads based on Sch. 10 steel pipe with roll grooves to ANSI/AWWA C606-07 specifications. For information on other pipe schedules contact **Shurjoint**.
- **For one time field test only** the maximum joint working pressure may be increased 1½ times the figures shown.
- **Warning:** Piping systems must always be depressurized and drained before attempting disassembly and or removal of any components.
- **Shurjoint** reserves the right to change specifications, designs and or standard equipment without notice and without incurring any obligations.

Job Name:	System No.	Location:
Contractor:	Approved:	Date:
Engineer:	Approved:	Date:

Shurjoint product specifications in U.S. customary units and metric are approximate and are provided for reference only. For precise measurements, please contact **Shurjoint** Technical Service. **Shurjoint** reserves the right to change or modify product design, construction, specifications, or materials without prior notice and without incurring any obligations to make such changes and modifications on **Shurjoint** products previously subsequently sold.