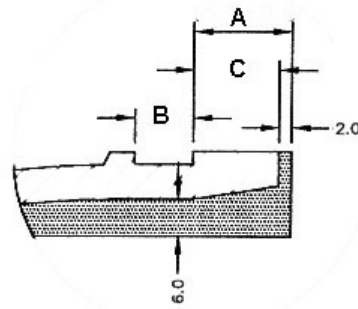
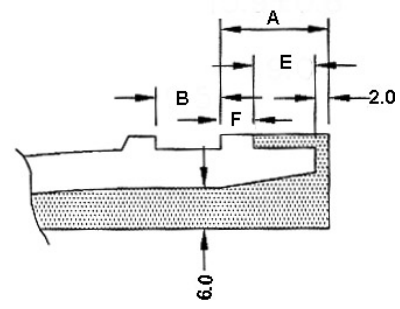


## RUBBER LINED FITTINGS

**Shurjoint** ductile iron grooved end fittings are also available with rubber lining for abrasive services. The lining is available covering the interior and ends of the fittings for abrasive services ( "End Wrap" ) or the lining can be further wrapped around the seating area of the fittings for abrasive and corrosive service applications ( "Total Wrap" ). Contact **Shurjoint** for details.



For Abrasion Service  
("End Wrap" )



For Corrosion and/or Abrasion Services  
("Total Wrap" )

Nominal Pipe Size	Pipe OD	A ±0.8 / ±0.03	B ±0.8 / ±0.03	C	E	F	Rubber Lining Thickness
mm in	mm in	mm in	mm in	mm in	mm in	mm in	mm in
50 2	60.3 2.375	15.9 0.63	9.5 0.375	13.9 0.55	9.0 0.35	4.9 0.2	6.0 0.24
65 2.5	73.0 2.875	15.9 0.63	9.5 0.375	13.9 0.55	9.0 0.35	4.9 0.2	6.0 0.24
65 2.5	76.1 3.000	15.9 0.63	9.5 0.375	13.9 0.55	9.0 0.35	4.9 0.2	6.0 0.24
80 3	88.9 3.500	15.9 0.63	9.5 0.375	13.9 0.55	9.0 0.35	4.9 0.2	6.0 0.24
100 4	114.3 4.500	15.9 0.63	9.5 0.375	13.9 0.55	9.0 0.35	4.9 0.2	6.0 0.24
125 5	139.7 5.500	15.9 0.63	9.5 0.375	13.9 0.55	9.0 0.35	4.9 0.2	6.0 0.24
125 5	141.3 5.563	15.9 0.63	9.5 0.375	13.9 0.55	9.0 0.35	4.9 0.2	6.0 0.24
150 6	165.1 6.500	15.9 0.63	9.5 0.375	13.9 0.55	9.0 0.35	4.9 0.2	6.0 0.24
150 6	168.3 6.625	15.9 0.63	9.5 0.375	13.9 0.55	9.0 0.35	4.9 0.2	6.0 0.24
200 8	219.1 8.625	19.05 0.75	11.13 0.44	17.05 0.67	9.0 0.35	8.1 0.32	6.0 0.24
200JIS 8	216.3 8.516	19.05 0.75	11.13 0.44	17.05 0.67	9.0 0.35	8.1 0.32	6.0 0.24
250 10	273.0 10.750	19.05 0.75	12.70 0.50	17.05 0.67	9.0 0.35	8.1 0.32	6.0 0.24
250JIS 10	267.4 10.528	19.05 0.75	12.70 0.50	17.05 0.67	9.0 0.35	8.1 0.32	6.0 0.24
300 12	323.9 12.750	19.05 0.75	12.70 0.50	17.05 0.67	9.0 0.35	8.1 0.32	6.0 0.24
300JIS 12	318.5 12.539	19.05 0.75	12.70 0.50	17.05 0.67	9.0 0.35	8.1 0.32	6.0 0.24
350 14	355.6 14.000	23.83 0.94	12.70 0.50	21.83 0.86	9.0 0.35	12.8 0.50	6.0 0.24
400 16	406.4 16.000	23.83 0.94	12.70 0.50	21.83 0.86	9.0 0.35	12.8 0.50	6.0 0.24
450 18	457.2 18.000	25.4 1.00	12.70 0.50	23.4 0.92	9.0 0.35	14.4 0.57	6.0 0.24
500 20	508.0 20.000	25.4 1.00	12.70 0.50	23.4 0.92	9.0 0.35	14.4 0.57	6.0 0.24
550 22	558.8 22.000	25.4 1.00	14.30 0.56	23.4 0.92	9.0 0.35	14.4 0.57	6.0 0.24
600 24	609.6 24.000	25.4 1.00	14.30 0.56	23.4 0.92	9.0 0.35	14.4 0.57	6.0 0.24

## MATERIAL SPECIFICATIONS

- **Fitting body:**  
Ductile Iron to ASTM A536, Gr. 65-45-12, Min. tensile strength 448MPa (65,000 psi).
- **Surface Finish:**  
Orange color painted or red RAL3000 color painted.
- **Lining:**  
Natural Rubber.

### General Notes:

- Pressure ratings listed are CWP (cold water pressure) or maximum working pressure within the service temperature range of the gasket used in the coupling. This rating may occasionally differ from maximum working pressures listed and/or approved by UL, ULC, and/or FM as testing conditions and test pipes differ. For additional information contact **Shurjoint**.
- Maximum working pressures and end loads listed are total of internal and external pressures and loads based on Sch. 40 steel pipe with roll grooves to ANSI/AWWA C606-97 specifications. For information on other pipe schedules contact **Shurjoint**.
- **For one time field test only** the maximum joint working pressure may be increased 1-1/2 times the figures shown.
- **Warning:** Piping systems must always be depressurized and drained before attempting disassembly and or removal of any components.
- **Shurjoint** reserves the right to change specifications, designs and or standard equipment without notice and without incurring any obligations.